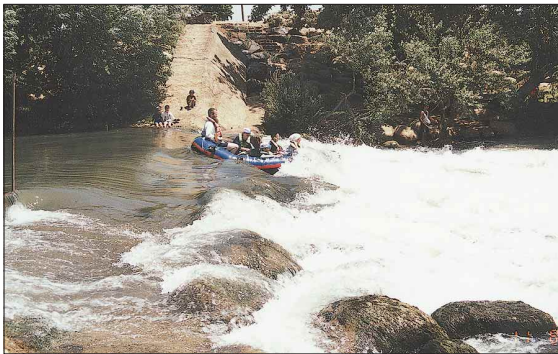
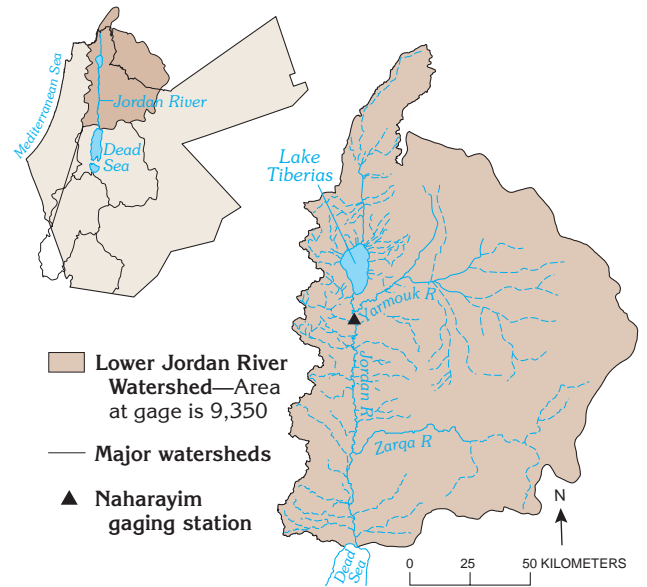


# Lower Jordan River

From the outlet of Lake Tiberias, the Jordan River flows south through the Rift Valley to the Dead Sea. Tributaries to the Jordan River, south of the Yarmouk River, are deeply incised wadis that cross the eastern and western escarpments from the Mountain Belt and Jordan Highland. The characteristics of the lower Jordan River are much different than those of the upper Jordan River. Only a small percentage of the inflow to Lake Tiberias is released to the lower Jordan River; and much of the discharge from the Yarmouk River is diverted for water supply before its confluence with the Jordan River. Water-quality differences between the upper and lower Jordan River also are significant. Water quality in the lower Jordan does not support many uses because of high chlorides introduced from saline springs along the lower Jordan River or diverted from Lake Tiberias, and from irrigation return flows. Chloride concentrations are much higher during the summer when there is less dilution by rainfall runoff.



*Rafters on the lower Jordan River during a period of high flow*

Since 1979, flow characteristics of the lower Jordan River have been measured at Naharayim below the confluence with the Yarmouk River. The drainage area at the gaging station is 9,350 km²; however, most of the flow from the upper Jordan and Yarmouk Rivers is diverted for water supply. Flow diversions have only a limited effect on large floods so that maximum monthly-flow volumes at this site are more representative of its large drainage area. A number of large floods with peak discharges near 1,000 cubic meters per second (m³/s) have occurred at Naharayim in recent years.

