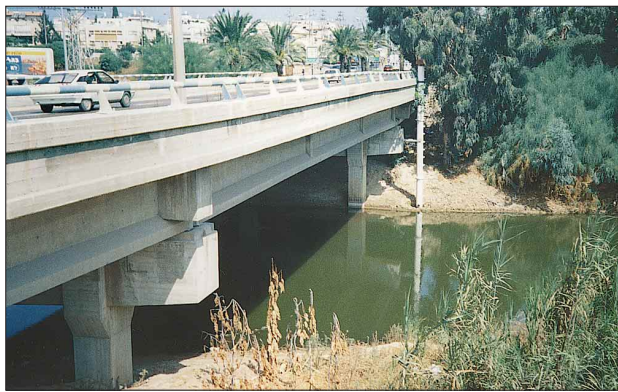
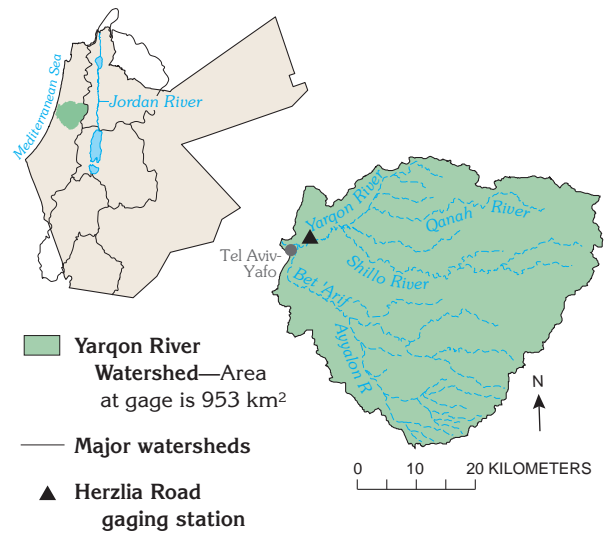


# Yarqon River

The Yarqon River drains a broad portion of the Mediterranean watershed from the western Mountain Belt and across the Coastal Plain. The Yarqon watershed receives relatively heavy rainfall and has moderate temperatures. Average rainfall over this basin for 1961–97 is 611 mm, or about 1,000 MCM over the entire watershed and 582 MCM at the gaging station. The Yarqon River drains some of the most densely populated areas of the region, including Tel Aviv-Yafo. The quality of water in the Yarqon River has been negatively impacted for the last several decades by diversion of the river's source waters to the National Water Carrier and by the discharge of treated wastewater to the stream. However, major efforts over the last several years have led to increased streamflow and marked improvements in the river's water quality and ecosystem functions.



Yarqon River near Tel Aviv-Yafo

Flow characteristics of the Yarqon River have been measured since 1941 at Herzlia Road, where the drainage area is only 953 km<sup>2</sup>. At this location, the stream typically flows only during December through March in most years. Flows have never been observed from June through September, as shown in the graph of monthly flow volumes to the right. The largest observed flood on the Yarqon River occurred on November 9, 1955 (1956 water year), and had a peak discharge of 508 m<sup>3</sup>/s. The maximum observed annual flow volume, associated with a series of large storms, occurred in 1992.

